

Catalog

Catalog	1
Company Profile.....	2
GUARANTEE OF QUALITY.....	3
Product Range.....	4
● Ball Joint Series	5
● Engine Parts Series	6
● Disc Brake Parts Series	9
● Clutch Parts Series.....	12
● Gearbox Parts Series	13
● Door Hinge Series.....	13
● Fasteners	14
CONTACT	15

Company Profile

Xiamen Hadron Import and Export Co., Ltd is located in Xiamen China, a beautiful port city, beside the Taiwan island with the Taiwan straits and its transportation is very convenient. As a participant of the Global Supply Chain, we provide wide coming drawing processing service for auto industry.

The cooperation factory occupies an area of 7,000sqm and a construction area of 5,600sqm. The company specializes in producing heavy auto parts, such as Sitaier, Hongyan, etc. Products range is about one hundred kinds and main products are divided into chassis and engine.

The factory was established in 1993, it has developed to be professional production enterprise with definite scale. Now company has had fixed assets more than 10 million RMB, TS16949:2009 Quality carried out efficiently. Quality of product will constantly rise and value of output will greatly rise year after year.

Company has market as guide and as benefit of client as tenet, serves society with excellent product, sincerely hopes that lots of users cooperate with us hand in hand and warm welcomes your visit.



GUARANTEE OF QUALITY

Coordinate Measuring Maching
Infrared carbon-sulfur analyzer
Metallurgical Microscopy
Superficial Rockwell & Vickers Hardness Tester

Spectrophotometer
Brinell hardness tester
Rockwell hardness tester

➤ Infrared carbon-sulfur analyzer



➤ Coordinate Measuring Maching



➤ Metallurgical Grinder



➤ Spectrophotometer



➤ Dryer



➤ Metallurgical Microscopy

➤ Brinell

➤ Rockwell

➤ Superficial

Product Range

- **Ball Joint Series**
- **Engine Parts Series**
- **Disc Brake Parts Series**
- **Clutch Parts Series**
- **AMT Parts Series**
- **Door Hinge Series**
- **Fasteners**

● **Ball Joint Series**



Tie Rod End



Tie Rod End



AMT Connecting Rod



Hand Throttle Ball Joint



AMT Connecting Rod



Butterfly valve ball joint



Butterfly valve ball joint



AMT Connecting Rod

● **Engine Parts Series**



Connecting Rod Bolt



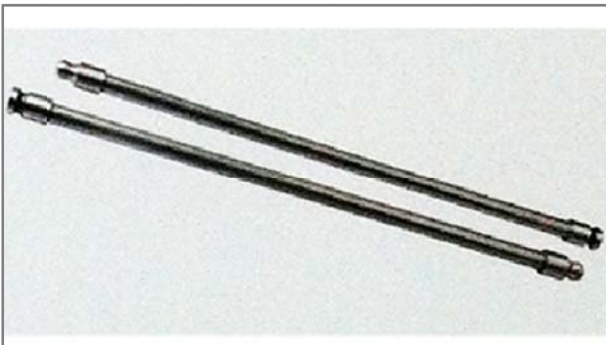
Flange



Crankshaft Flange



Knuckle Pin



Valve Push Rod



Drive Shaft



Piston Pin



Intake Valve Rocker Arm



Exhaust Valve Rocker Arm



Intake Valve Seat Ring



Exhaust Valve Seat Ring



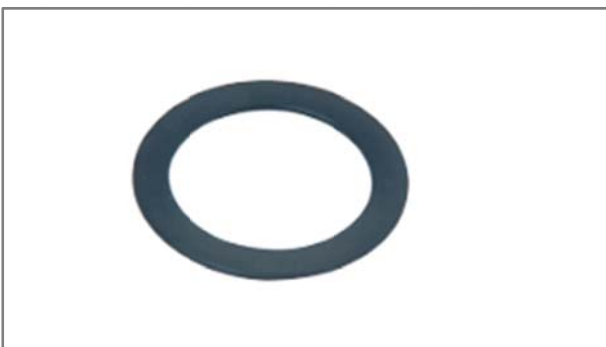
Valve Tappet



Valve Rocker Seat



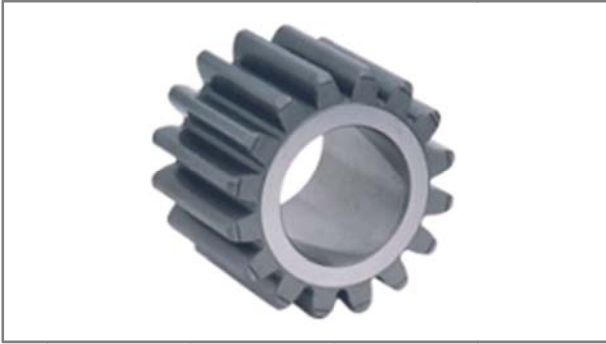
Planetary Gear Shaft



Gear Spacer



Valve Spring Retainer



Differential Planetary Gear



Differential Center Gear



Center Gear Spacer

● **Disc Brake Parts Series**



Disc Brake Lever Assembly



Brake Rod



Disc Brake Lever Assembly



Brake Rod



Disc Brake Beam Assembly



Brake Rod



Semilune Bearing Seat



Sliding Pin



Long/Short Sliding Pin



Round Pin



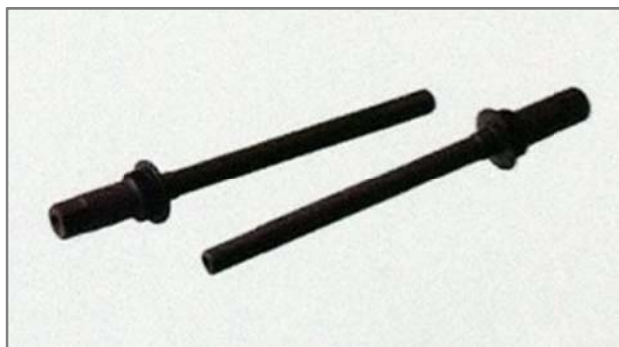
Multiple thread Screw



Adjusting Sleeve



Driven Shaft



Drive Shaft



Camshaft



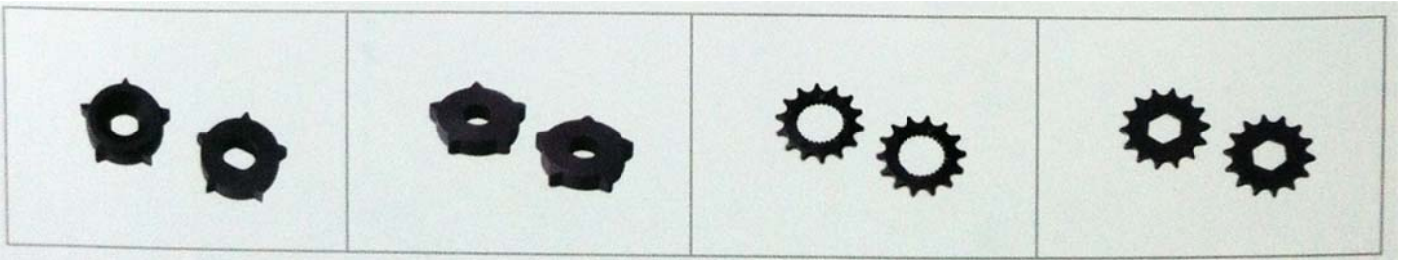
Sprocket Rod



Brake Adapter

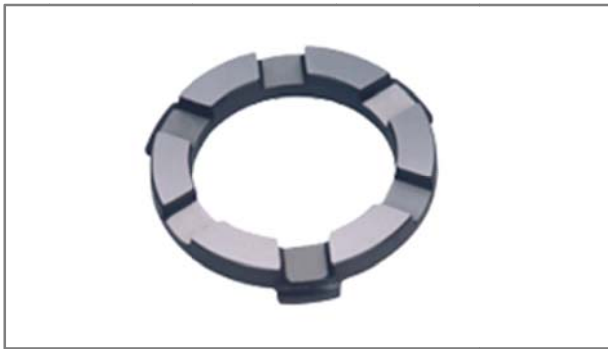


Connection



Other parts

● **Clutch Parts Series**



Separating Ring



Clutch Disengaging Lever Assembly



Clutch Master Cylinder



Clutch Booster



Sleeve



Elastic Cylindrical Pin



Stop Bolt



Clutch Arm

● Gearbox Parts Series



● Door Hinge Series



● **Fasteners**



Thrust Rod Bolt & Nut



Drive Shaft Bolt & Nut



Valve Rocker Adjuster Bolt & Nut



Cylinder Head Bolt



Steel Seat Bolt



Wheel Nut



Front Wheel Bolt



Rear Wheel Bolt

CONTACT



Xiamen Hadron Import and Export Co., Ltd

Web: <http://www.xmhadron.com>

Tel: +86-592-5168716

Fax: +86-592-5897879

Email: linhongxin@xmhadron.com

P.C.: 361006

Add: Unit 1106, Block 3, Anport International Business Center, No.1690 Gangzhong Rd., Xiamen, China